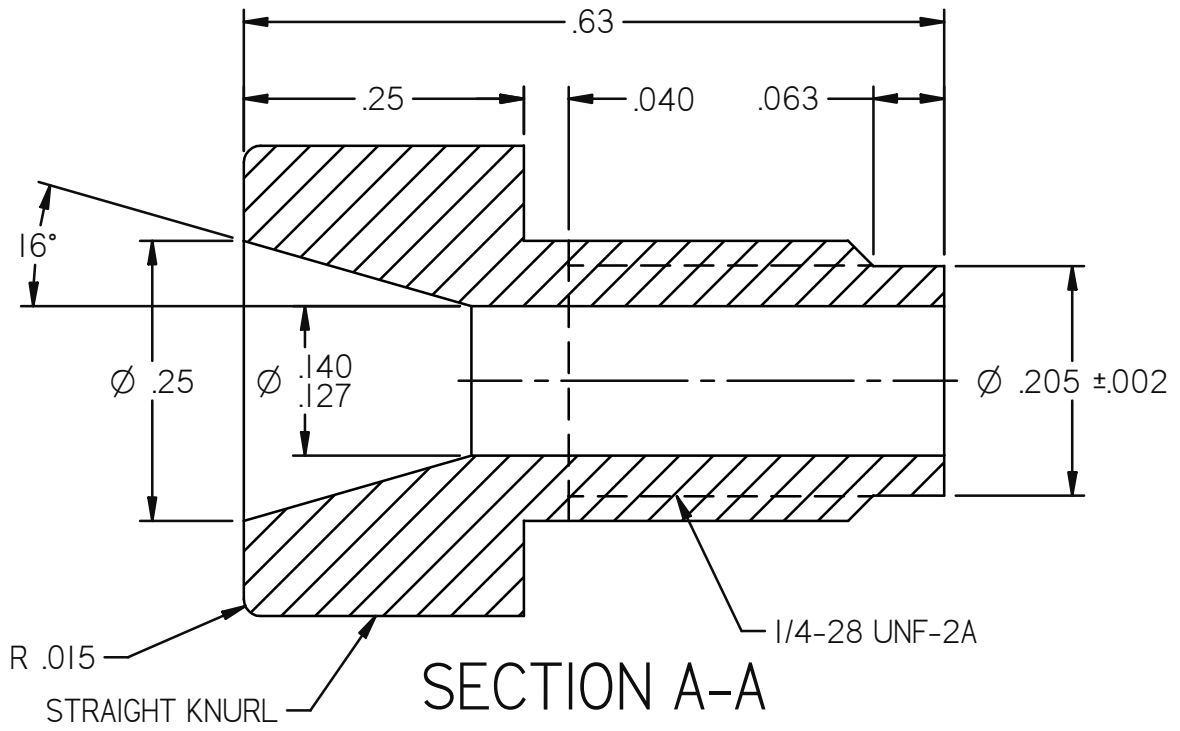
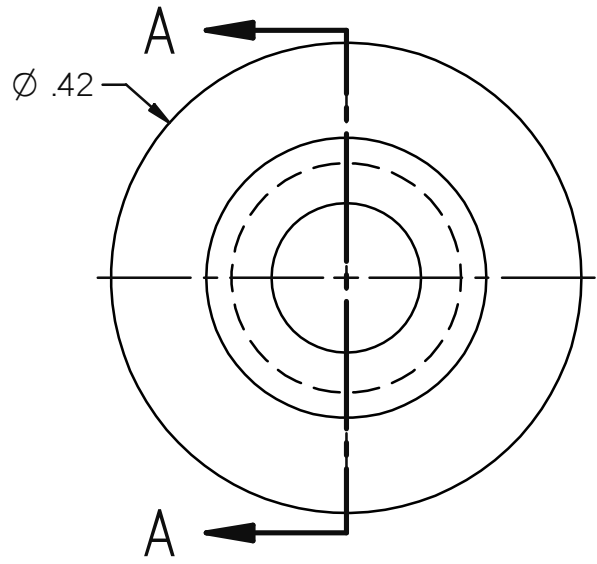


Revisions			
Rev	Description	Date	Initials
A	Initial Release	9/28/2010	TPA
B	Updated drawing to match actual mold features and dimension	3/26/2014	TKV



- NOTES:
1. REMOVE ALL BURRS / FLASHING.
  2. SURFACE FINISH AS MOLDED.
  3. ALL RADII TO BE .031" MAX, UNLESS NOTED.
  4. ALL DRAFT ANGLES TO BE 1° MAX, UNLESS NOTED.

<b>CONFIDENTIAL:</b>		<b>GRACE Davison</b>	
This drawing is the property of Alltech Associates, Inc. Any reproductions or modifications of this drawing or its contents without consent of Alltech is prohibited.		GRACE Davison Discovery Sciences 2051 Waukegan Road, Deerfield, IL 60015 (847) 948-8600	
		DESCRIPTION: 1/8" Flange Free Nut	
GENERAL TOLERANCES		MATERIAL: PEEK	P/N: 2110825
DECIMAL: XX ±.010"; XXX ±.005" FRACTIONAL: ± 1/64" ANGULAR: ±1/2° UNLESS OTHERWISE SPECIFIED		DRAWN: TKV	APPROVED: SPS
		DATE: 03/26/14	SCALE: 6 = 1
63/ ✓		DRAWING NO: 0001442	REV B
		SIZE A	SHEET 1 OF 1