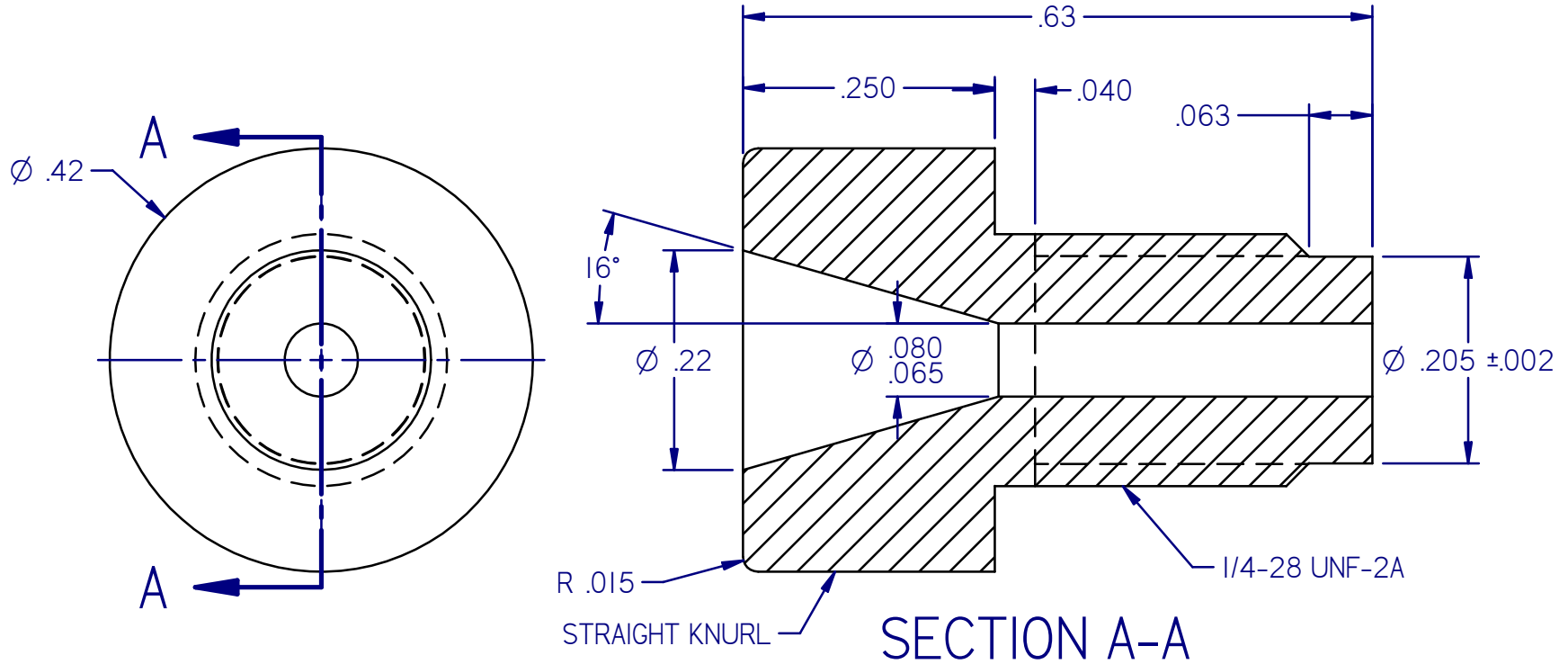


Revisions			
Rev	Description	Date	Initials
A	Initial Release	10/1/2010	TPA
B	Updated drawing to match actual mold features and dimension	3/26/2014	TKV



NOTES:

1. REMOVE ALL BURRS/ FLASHING.
2. SURFACE FINISH AS MOLDED.
3. ALL RADII .031" MAX UNLESS NOTED.
4. ALL DRAFT ANGLES 1° MAX UNLESS NOTED.

CONFIDENTIAL:		GRACE Davison GRACE Davison Discovery Sciences 2051 Waukegan Road, Deerfield, IL 60015 (847) 948-8600	
This drawing is the property of Alltech Associates, Inc. Any reproductions or modifications of this drawing or its contents without consent of Alltech is prohibited.		DESCRIPTION: 1/16" Flanged Nut	
GENERAL TOLERANCES		MATERIAL: PEEK	P/N: 2110819
DECIMAL: XX ±.010"; XXX ±.005" FRACTIONAL: ± 1/64" ANGULAR: ±1/2° UNLESS OTHERWISE SPECIFIED		DRAWN: TKV SCALE: 6=1 SIZE A	APPROVED: SPS DATE: 03/26/14
63/ ✓ UNLESS OTHERWISE SPECIFIED		DRAWING NO: 0001448	REV B SHEET 1 OF 1