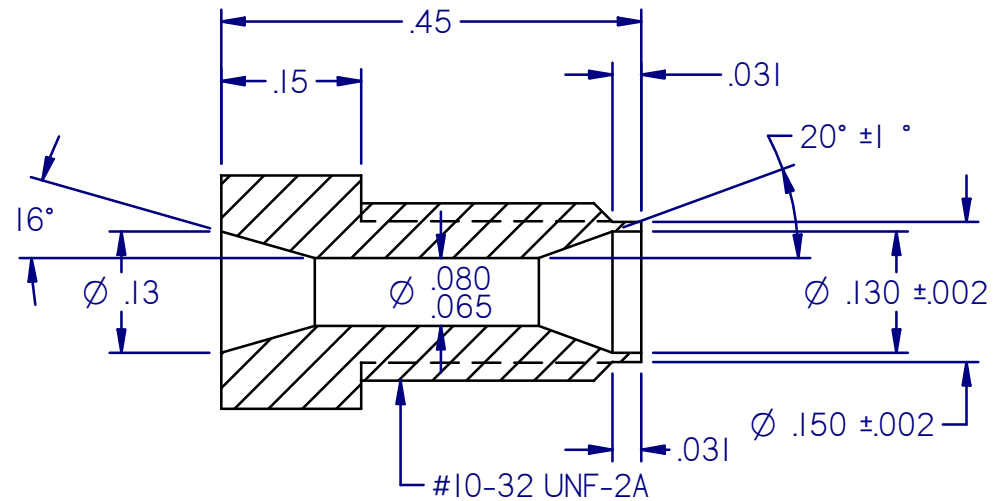
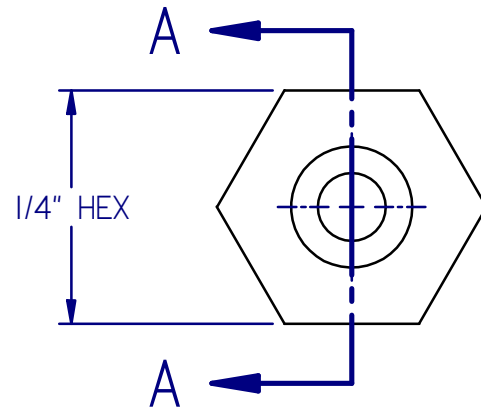


Revisions			
Rev	Description	Date	Initials
J	Updated drawing from old cad program	4/10/2010	TPA
K	Updated drawing to match actual mold features and dimension	3/26/2014	DVK



SECTION A-A

NOTES:

1. REMOVE ALL BURRS/FLASHING.
2. SURFACE FINISH AS MOLDED.
3. ALL RADII .031" MAX UNLESS NOTED.
4. ALL DRAFT ANGLES 1° MAX UNLESS NOTED.

CONFIDENTIAL:

This drawing is the property of Alltech Associates, Inc. Any reproductions or modifications of this drawing or its contents without consent of Alltech is prohibited.

GENERAL TOLERANCES

DECIMAL: XX ±.010"; XXX ±.005"

FRACTIONAL: ± 1/64"

ANGULAR: ±1/2°
UNLESS OTHERWISE SPECIFIED

63/

GRACE Davison

GRACE Davison Discovery Sciences
2051 Waukegan Road, Deerfield, IL 60015
(847) 948-8600

DESCRIPTION: Short Hex-Head Fitting PEEK

MATERIAL: PEEK

P/N: 2110743

DRAWN: DVK

APPROVED: SPS

DATE: 03/24/14

SCALE: 5=1

SIZE A

DRAWING NO: 0000372

REV
K

SHEET
1 OF 1