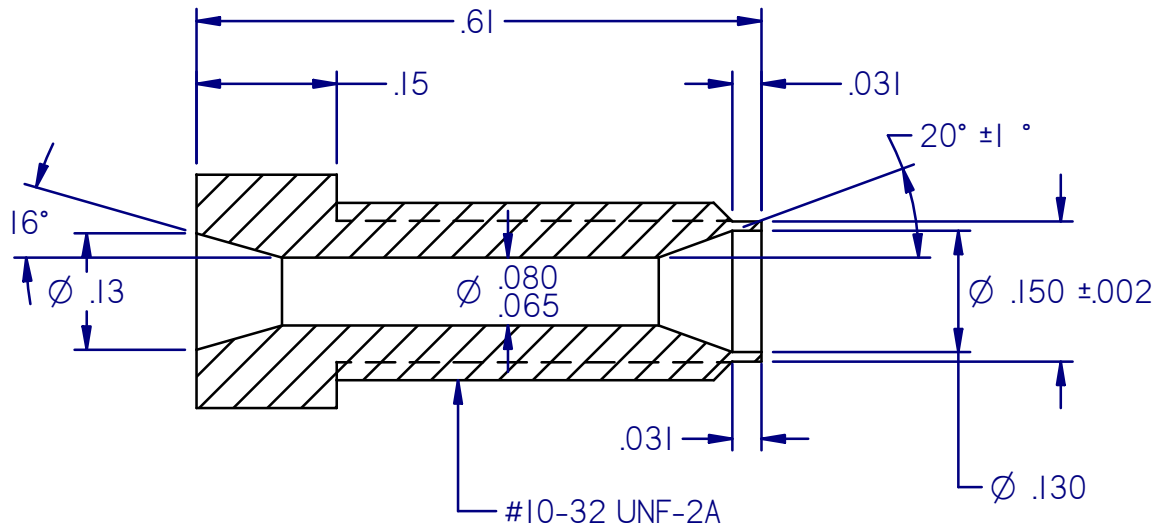
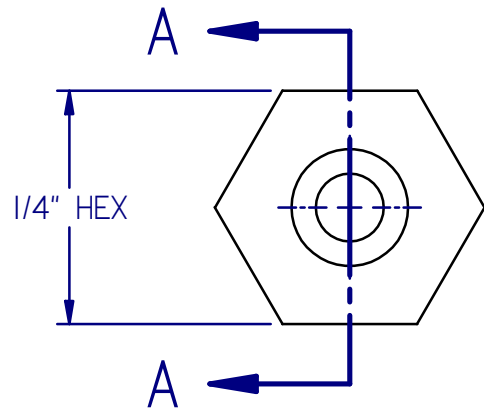


Revisions			
Rev	Description	Date	Initials
J	Updated drawing from old cad program	4/10/2010	TPA
K	Updated to match actual production	3/24/2014	DVK



SECTION A-A

- NOTES:
1. REMOVE ALL BURRS/FLASHING.
 2. SURFACE FINISH AS MOLDED.
 3. ALL RADII .031" MAX UNLESS NOTED.
 4. ALL DRAFT ANGLES 1° MAX UNLESS NOTED.

<p>CONFIDENTIAL:</p> <p>This drawing is the property of Alltech Associates, Inc. Any reproductions or modifications of this drawing or its contents without consent of Alltech is prohibited.</p>		<p>GRACE Davison</p> <p>GRACE Davison Discovery Sciences 2051 Waukegan Road, Deerfield, IL 60015 (847) 948-8600</p>	
<p>DESCRIPTION: Long Hex-Head Nut</p>			
<p>MATERIAL: PEEK</p>		<p>P/N: 2110742</p>	
<p>GENERAL TOLERANCES DECIMAL: XX ±.010"; XXX ±.005" FRACTIONAL: ± 1/64" ANGULAR: ±1/2° UNLESS OTHERWISE SPECIFIED</p>		<p>DRAWN: DVK</p>	<p>APPROVED: SPS</p>
<p>63/</p>	<p>SCALE: 5=1 SIZE A</p>	<p>DRAWING NO: 0000371</p>	<p>DATE: 03/24/14</p>
		<p>REV K</p>	<p>SHEET 1 OF 1</p>